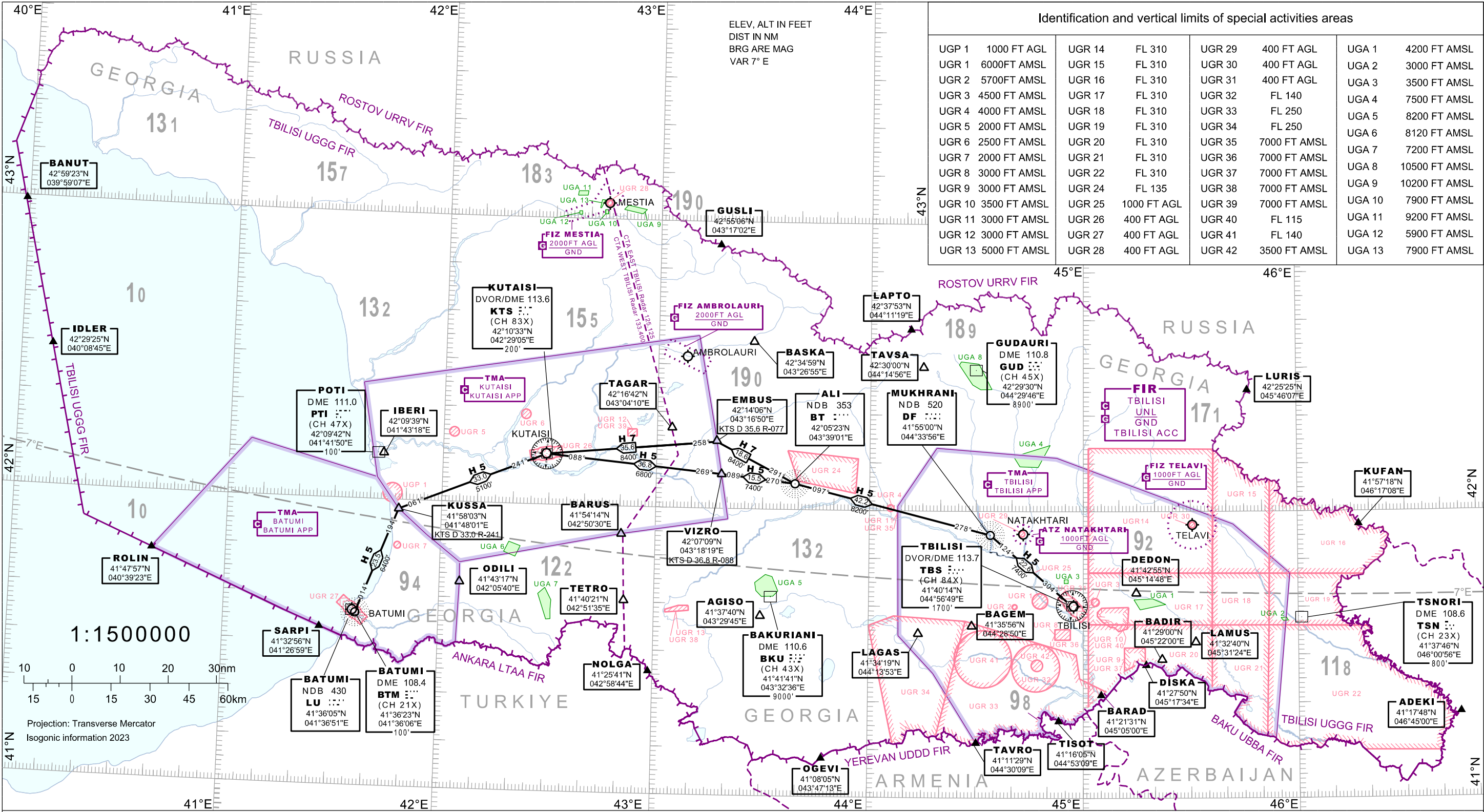


**ENR 6 En-route Charts****ENR 6.1**

<b>Chart Name</b>	<b>Page</b>
Enroute chart - ICAO (Conventional navigation routes)	ENR 6-3
Enroute chart - ICAO (Area navigation RNAV routes)	ENR 6-5
Prohibited, restricted and aerial sporting areas chart - Index chart	ENR 6-7
Bird migration routes (spring) - Index chart	ENR 6-9
Bird migration routes (autumn) - Index chart	ENR 6-11
Free Route Airspace South Caucasus (FRASC) - Index chart	ENR 6-13-1
FRASC Lowest available level (LAL) sector's coordinates	ENR 6-13-3
FRASC Lowest available level (LAL) sector's coordinates (continuation)	ENR 6-13-5
Enroute ATC Surveillance Minimum Altitude chart - Index chart	ENR 6-15-1
Enroute ATCSMAC sector's coordinates	ENR 6-15-3
Enroute ATCSMAC sector's coordinates (continuation)	ENR 6-15-5

*PAGE INTENTIONALLY LEFT BLANK*

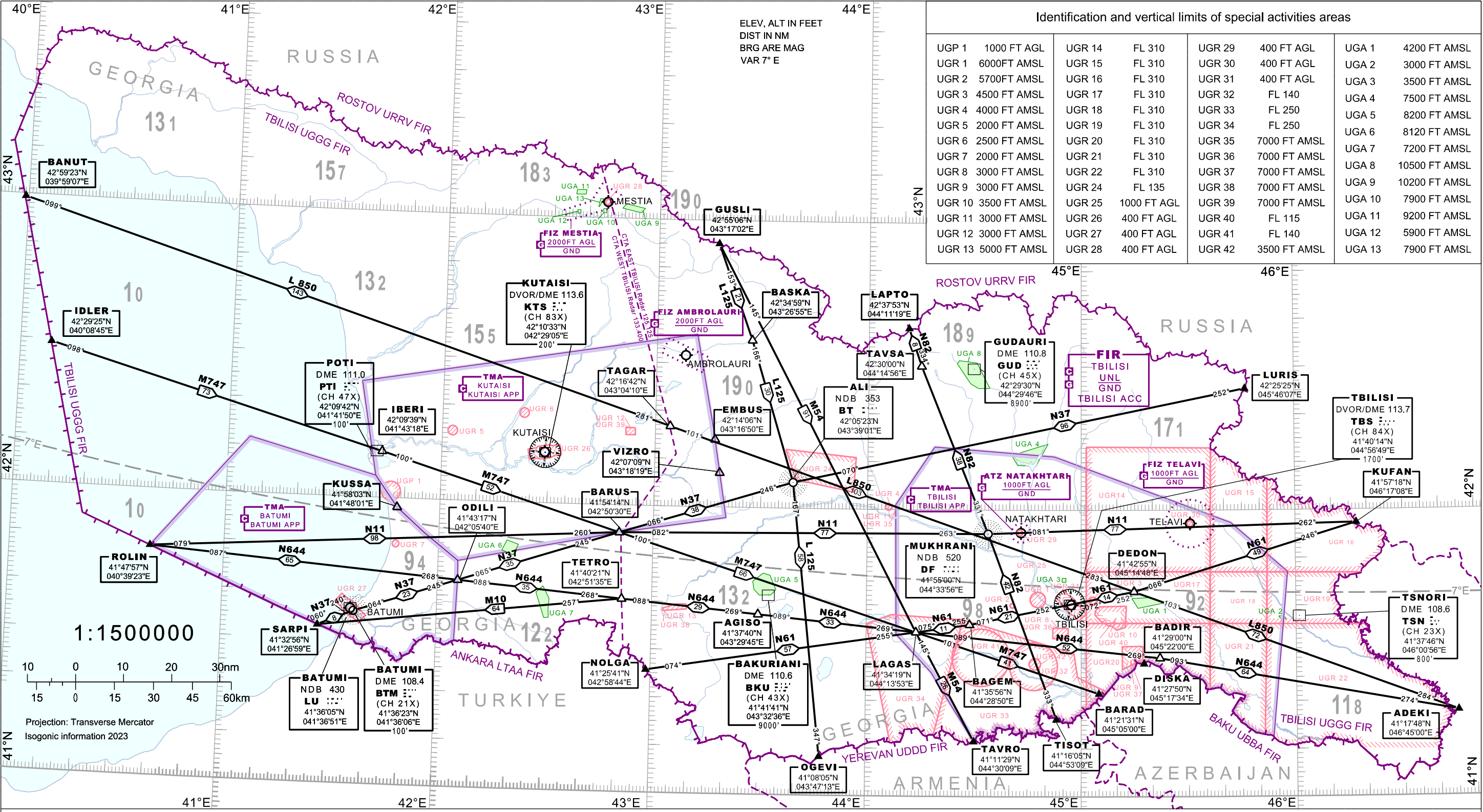
ENROUTE CHART - ICAO (Conventional navigation routes)



COMMUNICATION FACILITIES																	
TBILISI ACC Tbilisi Radar		EAST UPPER Sector FL 660 FL345/FL355/FL365/FL375		EAST LOWER Sector FL345/FL355/FL365/FL375 FL85 or 2000FT AGL whichever is higher Primary-125.125 Secondary-135.125		WEST UPPER Sector FL 660 FL345/FL355/FL365/FL375 Primary-134.450 Secondary-135.750		WEST LOWER Sector FL345/FL355/FL365/FL375 FL85 or 2000FT AGL whichever is higher Primary-133.400 Secondary-135.625		TBILISI APP-134.600 TWR Primary-119.000 TWR Secondary-128.000 INFO-124.150 ATIS-132.800		KUTAIISI APP-127.100 TWR-125.500	BATUMI APP-124.425 TWR-118.600	MESTIA INFO-121.100	AMBROLAURI INFO-119.850	NATAKHTARI 131.750	TELAVI TWR-120.000
CTA EAST Primary-125.125 Secondary-135.125		CTA WEST Primary-133.400 Secondary-135.625															

*PAGE INTENTIONALLY LEFT BLANK*

ENROUTE CHART - ICAO (Area navigation (RNAV) routes)



COMMUNICATION FACILITIES

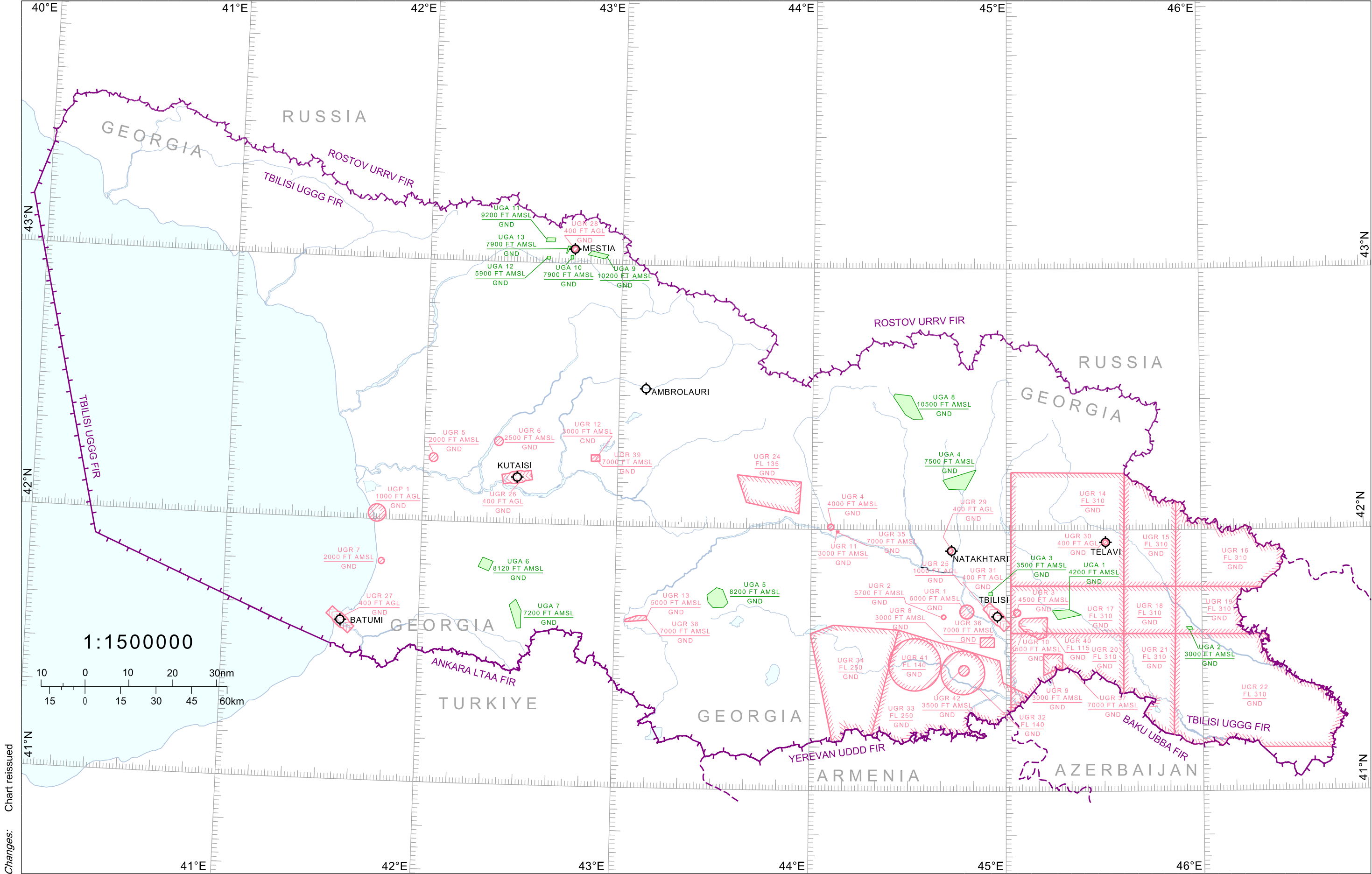
TBILISI ACC Tbilisi Radar		EAST UPPER Sector FL 660 FL345/FL355/FL365/FL375		EAST LOWER Sector FL345/FL355/FL365/FL375 FL85 or 2000FT AGL whichever is higher Primary-125.125 Secondary-135.125		WEST UPPER Sector FL 660 FL345/FL355/FL365/FL375 Primary-134.450 Secondary-135.750		WEST LOWER Sector FL345/FL355/FL365/FL375 FL85 or 2000FT AGL whichever is higher Primary-133.400 Secondary-135.625		TBILISI APP-134.600 TWR Primary-119.000 TWR Secondary-128.000 INFO-124.150 ATIS-132.800		KUTAIISI APP-127.100 TWR-125.500	BATUMI APP-124.425 TWR-118.600	MESTIA INFO-121.100	AMBROLAURI INFO-119.850	NATAKHTARI 131.750	TELAVI TWR-120.000
CTA EAST Primary-125.125 Secondary-135.125		CTA WEST Primary-133.400 Secondary-135.625		Primary-133.500 Secondary-135.350													

Changes: Chart reissued

*PAGE INTENTIONALLY LEFT BLANK*



PROHIBITED, RESTRICTED AND AERIAL SPORTING AREAS CHART - INDEX CHART



Changes: Chart reissued

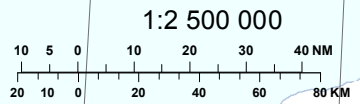
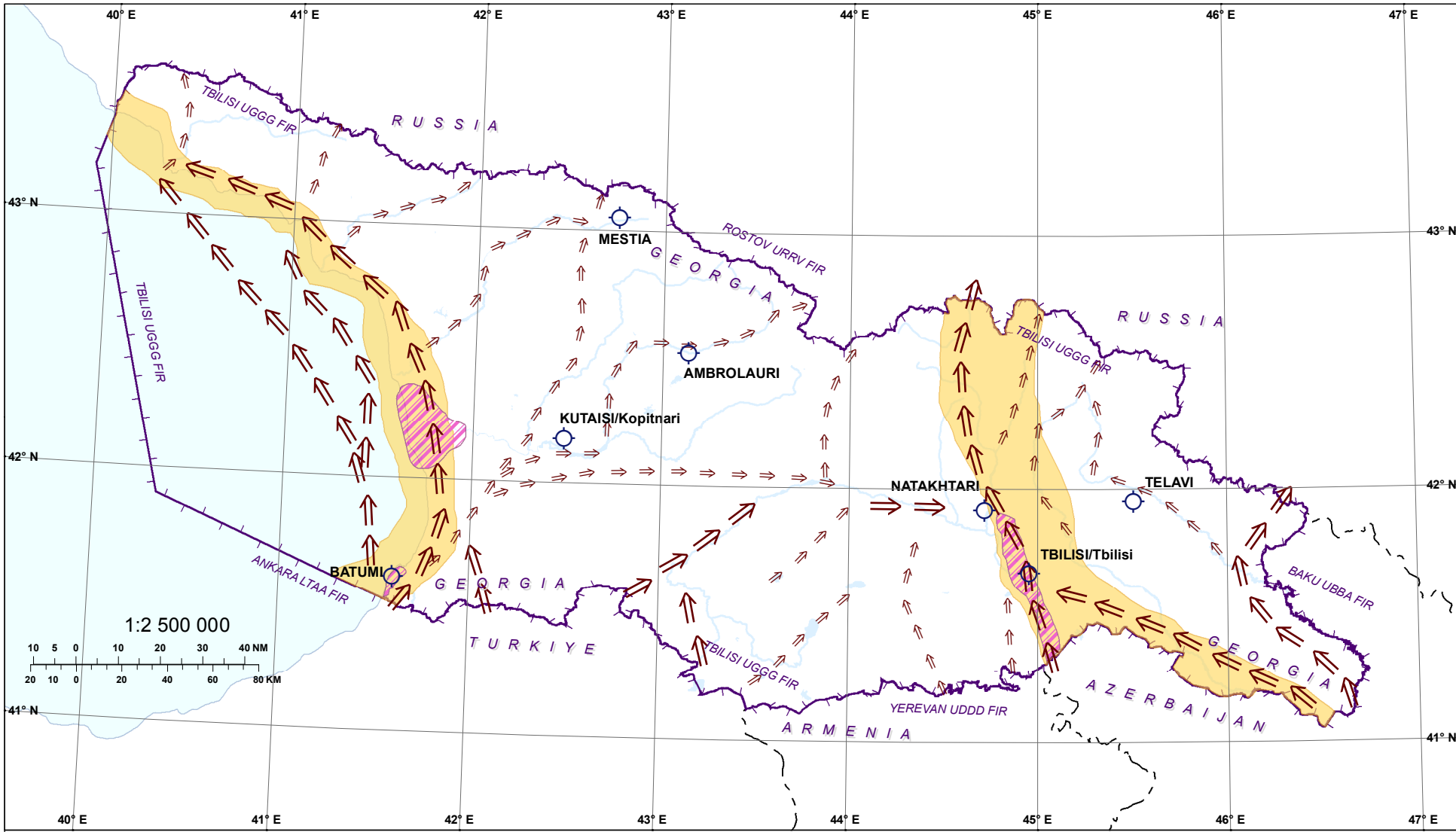
*PAGE INTENTIONALLY LEFT BLANK*



**BIRD MIGRATION ROUTES (SPRING)**

Changes: Chart reissued

© Georgian Air Navigation - Sakaeronavigatsia Ltd.



⇒ ⇒ Spring Migration

Bird Concentration Area (Autumn, Winter, Spring)

Main migration corridor

Aerodrome

--- Boundary

FIR

**Legend**

AIRAC AIP AMDT 05/25

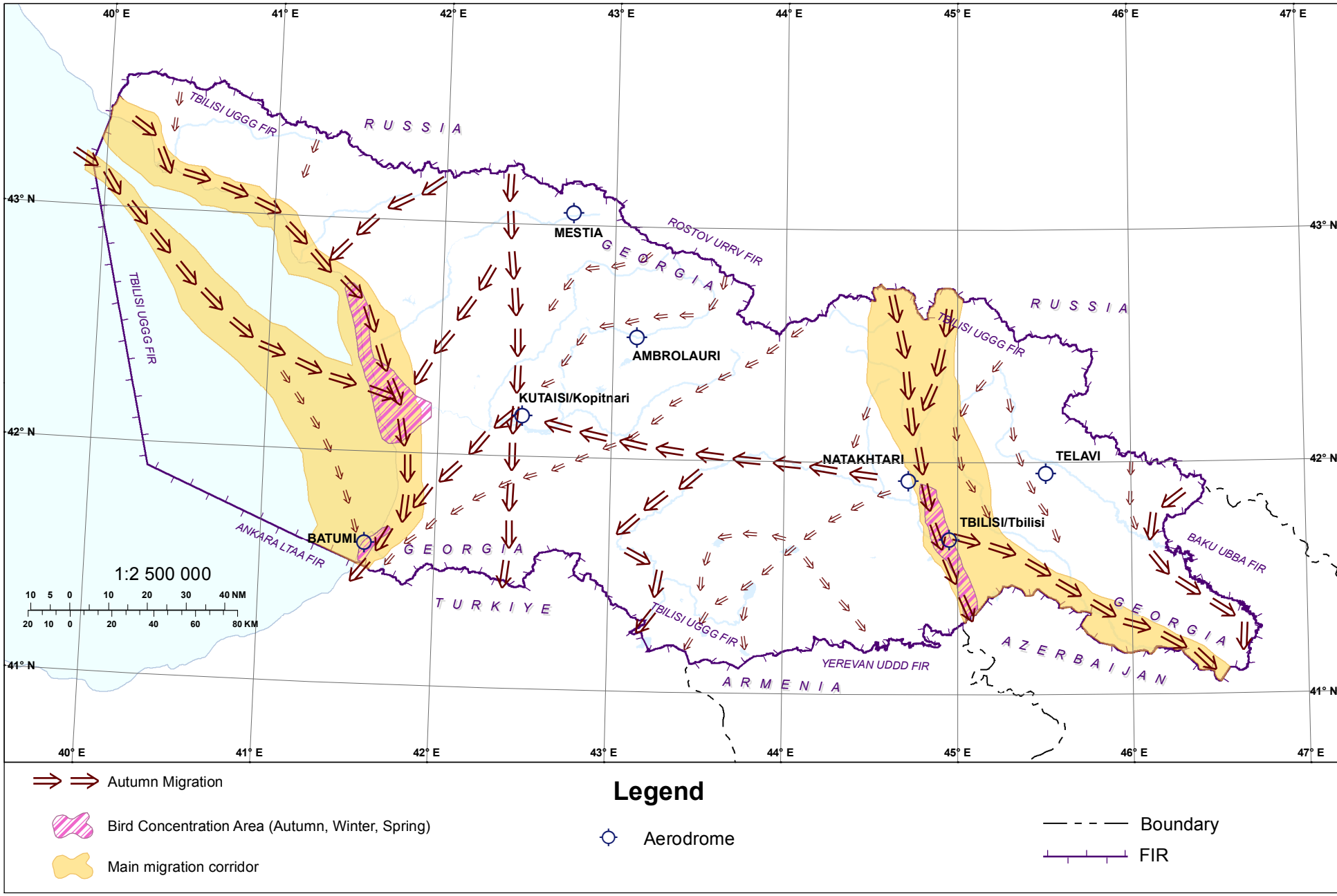
*PAGE INTENTIONALLY LEFT BLANK*

**BIRD MIGRATION ROUTES (AUTUMN)**

Changes: Chart reissued

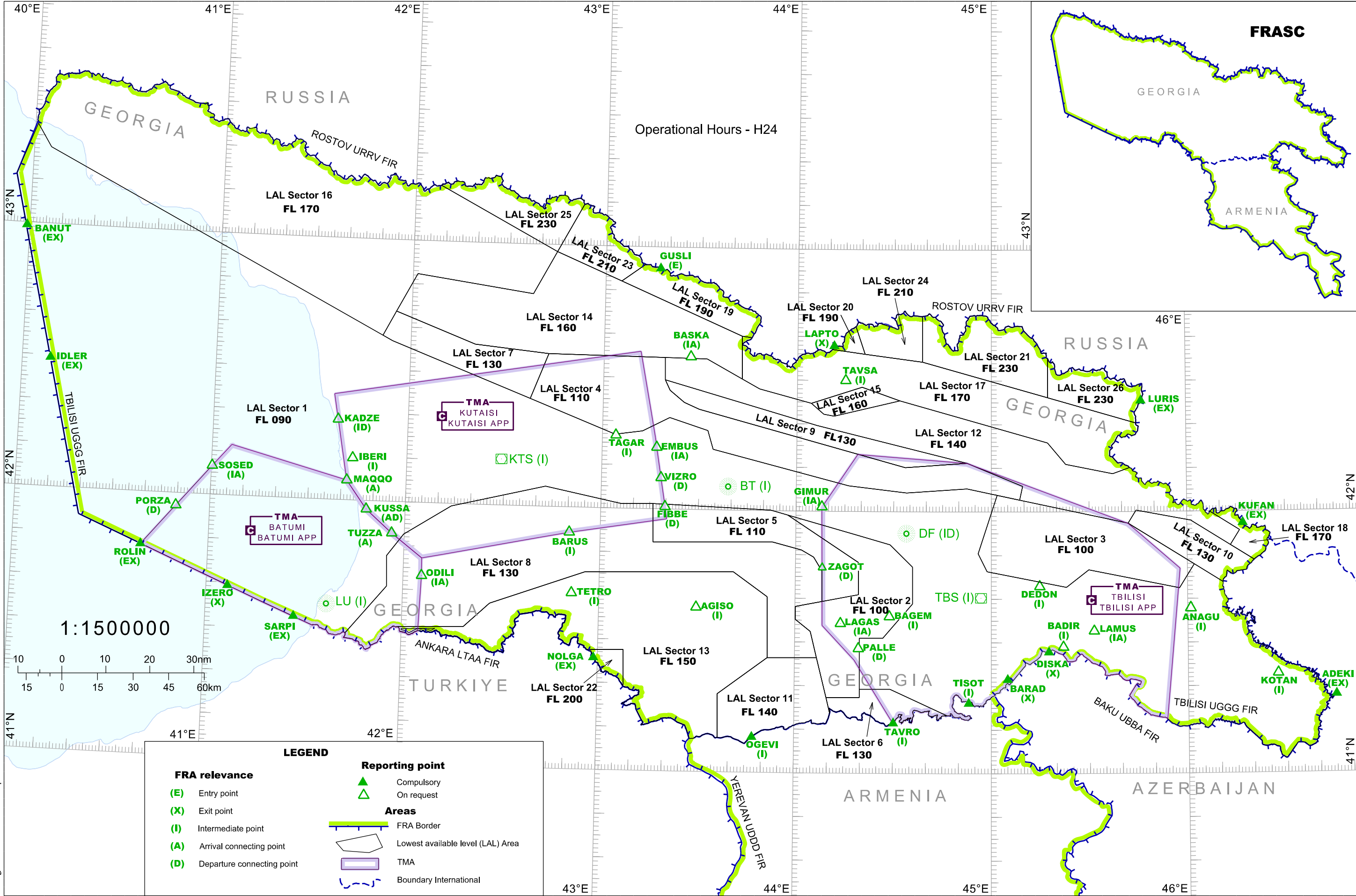
©Georgian Air Navigation - Sakaeronavigatsia Ltd.

AIRAC AIP AMDT 05/25



*PAGE INTENTIONALLY LEFT BLANK*

FREE ROUTE AIRSPACE SOUTH CAUCASUS (FRASC)



Changes: Sector 21 FL updated

*PAGE INTENTIONALLY LEFT BLANK*



**FRASC Lowest Available Level (LAL) Sectors' Coordinates**

Sector	Lateral limits
LAL Sector 1	413100N 0413300E - 413600N 0411700E - 415400N 0402000E - 431100N 0395500E - 432236N 0400048E - 431723N 0400517E - 423757N 0415113E - 423646N 0415418E - 422435N 0423724E - 421653N 0430357E - 421747N 0431222E - 422058N 0432040E - 421809N 0433231E - 421352N 0433413E - 420553N 0441607E - 420420N 0443356E - 420517N 0445232E - 420349N 0450147E - 415027N 0445556E - 414618N 0445842E - 414242N 0452300E - 414642N 0452950E - 414226N 0455734E - 414754N 0460208E - 414346N 0461053E - then along the state border with Azerbaijan to - 4118N 04501E -then along the state border with Armenia to - 411320N 0444622E - 411918N 0442911E - 411915N 0441950E - 413057N 0441943E - 413059N 0442651E - 413853N 0443554E - 414721N 0443551E - 415226N 0442856E - 415430N 0441913E - 415903N 0435727E - 420008N 0435210E - 420110N 0431601E - 420101N 0430617E - 420436N 0424253E - 415925N 0421406E - 415236N 0415949E - 414731N 0415445E - 414034N 0415505E - 412933N 0414259E -then along the state border with Turkiye - 413100N 0413300E
LAL Sector 2	415903N 0435727E - 415430N 0441913E - 415226N 0442856E - 414721N 0443551E - 413853N 0443554E - 413059N 0442651E - 413057N 0441943E - 411915N 0441950E - 411721N 0441951E - 411717N 0440943E - 412627N 0440643E - 413227N 0440444E - 413510N 0440008E - 413809N 0440005E - 413920N 0440816E - 414056N 0441922E - 414820N 0441917E - 415903N 0435727E
LAL Sector 3	420349N 0450147E - 420244N 0450841E - 415720N 0454158E - 414754N 0460208E - 414226N 0455734E - 414642N 0452950E - 414242N 0452300E - 414618N 0445842E - 415027N 0445556E - 420349N 0450147E
LAL Sector 4	423458N 0424250E - 423441N 0431857E - 422935N 0431905E - 422711N 0432036E - 422429N 0432506E - 422257N 0432944E - 421008N 0443329E - 421111N 0445232E - 420553N 0450936E - 420244N 0450841E - 420349N 0450147E - 420517N 0445232E - 420420N 0443356E - 420553N 0441607E - 421352N 0433413E - 421809N 0433231E - 422058N 0432040E - 421747N 0431222E - 421653N 0430357E - 422435N 0423724E - 423458N 0424250E
LAL Sector 5	420110N 0431601E - 420008N 0435210E - 415903N 0435727E - 414820N 0441917E - 414056N 0441922E - 413920N 0440816E - 414617N 0440811E - 414927N 0440532E - 415104N 0440145E - 415250N 0435255E - 415223N 0431615E - 420110N 0431601E
LAL Sector 6	411344N 0441053E - 411717N 0440943E - 411721N 0441951E - 411915N 0441950E - 411918N 0442911E - 411320N 0444622E - then along the state border with Armenia to - 411344N 0441053E
LAL Sector 7	424334N 0415510E - 423637N 0421958E - 423458N 0424250E - 422435N 0423724E - 423646N 0415418E - 423757N 0415113E - 424334N 0415510E
LAL Sector 8	412933N 0414259E - 414034N 0415505E - 414731N 0415445E - 415236N 0415949E - 415925N 0421406E - 420436N 0424253E - 420101N 0430617E - 420110N 0431601E - 415223N 0431615E - 415250N 0435255E - 415104N 0440145E - 414927N 0440532E - 414617N 0440811E - 413920N 0440816E - 413809N 0440005E - 413510N 0440008E - 413227N 0440444E - 412627N 0440643E - 412619N 0435141E - 414016N 0435126E - 414552N 0434101E - 414511N 0425535E - 413727N 0422643E - 413151N 0421851E - 413122N 0415858E - then along the state border with Turkiye - 412933N 0414259E
LAL Sector 9	422935N 0431905E - 421939N 0440608E - 421111N 0445232E - 421008N 0443329E - 422257N 0432944E - 422429N 0432506E - 422711N 0432036E - 422935N 0431905E
LAL Sector 10	414346N 0461053E - 414754N 0460208E - 415720N 0454158E - 420018N 0454426E - 415755N 0460110E - 415213N 0461316E - 414847N 0462030E - then along the state border with Azerbaijan to - 414346N 0461053E
LAL Sector 11	410752N 0433651E - 411752N 0433639E - 412619N 0435141E - 412627N 0440643E - 411717N 0440943E - 411344N 0441053E - then along the state border with Armenia - 410752N 0433651E

For continuation see ENR 6-13-5

*PAGE INTENTIONALLY LEFT BLANK*

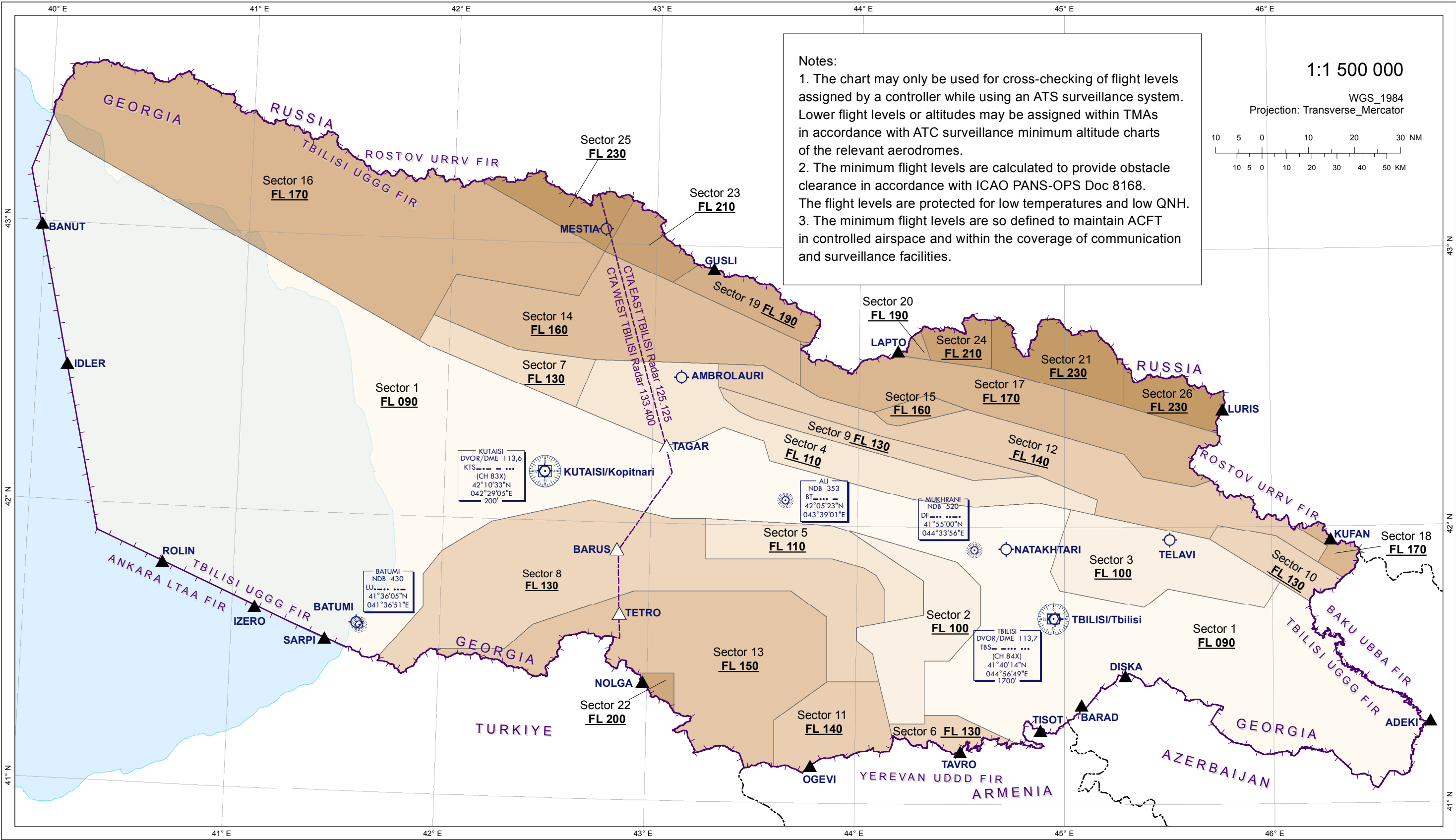
**FRASC Lowest Available Level (LAL) Sectors' Coordinates (Continuation)**

Sector	Lateral limits
LAL Sector 12	415952N 0460704E - 415536N 0461608E - 415213N 0461316E - 415755N 0460110E - 420018N 0454426E - 415720N 0454158E - 420244N 0450841E - 420553N 0450936E - 421111N 0445232E - 421939N 0440608E - 422935N 0431905E - 423441N 0431857E - 423432N 0433156E - 423004N 0434253E - 422751N 0434818E - 422443N 0440421E - 422214N 0440813E - 422149N 0441126E - 422526N 0443143E - 421550N 0451719E - 421054N 0452252E - 420843N 0453720E - 421005N 0454230E - then along the state border with Russia - 415952N 0460704E
LAL Sector 13	413122N 0415858E - 413151N 0421851E - 413727N 0422643E - 414511N 0425535E - 414552N 0434101E - 414016N 0435126E - 412619N 0435141E - 411752N 0433639E - 410752N 0433651E - then along the state border with Armenia to - 4107N 04328E - then along the state border with Turkiye to - 411915N 0430803E - 412738N 0430749E - 412727N 0425641E - then along the state border with Turkiye to - 413122N 0415858E
LAL Sector 14	425821N 0424441E - 425201N 0430454E - 423953N 0434241E - 423004N 0434253E - 423432N 0433156E - 423441N 0431857E - 423458N 0424250E - 423637N 0421958E - 424334N 0415510E - 425220N 0420123E - 424835N 0423733E - 425821N 0424441E
LAL Sector 15	422443N 0440421E - 422829N 0442001E - 422526N 0443143E - 422149N 0441126E - 422214N 0440813E - 422443N 0440421E
LAL Sector 16	431243N 0420754E - 425821N 0424441E - 424835N 0423733E - 425220N 0420123E - 424334N 0415510E - 423757N 0415113E - 431723N 0400517E - 432236N 0400048E - 432300N 0400100E - then along the state border with Russia to - 431243N 0420754E
LAL Sector 17	423705N 0441046E - 423602N 0442052E - 423418N 0443843E - 422610N 0451722E - 422017N 0454433E - then along the state border with Russia to - 421005N 0454230E - 420843N 0453720E - 421054N 0452252E - 421550N 0451719E - 422526N 0443143E - 422829N 0442001E - 422443N 0440421E - 422751N 0434818E - 423004N 0434253E - 423953N 0434241E - 423935N 0434543E - then along the state border with Russia to - 423705N 0441046E
LAL Sector 18	414847N 0462030E - 415213N 0461316E - 415536N 0461608E - 415952N 0460704E - then along the state border with Russia to - 4155N 04625E - then along the state border with Azerbaijan - 414847N 0462030E
LAL Sector 19	423935N 0434543E - 423953N 0434241E - 425201N 0430454E - 425554N 0431214E - then along the state border with Russia to - 423935N 0434543E
LAL Sector 20	424223N 0441758E - 423602N 0442052E - 423705N 0441046E - then along the state border with Russia to - 424223N 0441758E
LAL Sector 21	423505N 0451725E - 422610N 0451722E - 423418N 0443843E - 424446N 0443840E - then along the state border with Russia to - 423505N 0451725E
LAL Sector 22	412727N 0425641E - 412738N 0430749E - 411915N 0430803E - then along the state border with Turkiye to - 412727N 0425641E
LAL Sector 23	430923N 0425248E - 425821N 0424441E - 425201N 0430454E - 425554N 0431214E - then along the state border with Russia to - 430923N 0425248E
LAL Sector 24	424446N 0443840E - 423418N 0443843E - 423602N 0442052E - 424223N 0441758E - then along the state border with Russia to - 424446N 0443840E
LAL Sector 25	430923N 0425248E - 425821N 0424441E - 431243N 0420754E - then along the state border with Russia to - 430923N 0425248E
LAL Sector 26	422017N 0454433E - 422610N 0451722E - 423505N 0451725E - then along the state border with Russia to - 422017N 0454433E

*PAGE INTENTIONALLY LEFT BLANK*

ENROUTE ATC SURVEILLANCE MINIMUM ALTITUDE CHART

G E O R G I A



LEGEND

COMMUNICATION FACILITIES

Aerodrome	NDB	VOR/DME	FIR	Boundary (International)	<b>TBILISI ACC</b> Tbilisi Radar CTA EAST Primary - 125.125 Secondary - 135.125 CTA WEST Primary - 133.400 Secondary - 135.625	<b>EAST UPPER Sector FL660</b> FL345/FL355/FL365/FL375 Primary - 133.500 Secondary - 135.350 <b>EAST LOWER Sector FL345/FL355/FL365/FL375</b> FL85 or 2000FT AGL whichever is higher Primary - 125.125 Secondary - 135.125	<b>WEST UPPER Sector FL660</b> FL345/FL355/FL365/FL375 Primary - 134.450 Secondary - 135.750 <b>WEST LOWER Sector FL345/FL355/FL365/FL375</b> FL85 or 2000FT AGL whichever is higher Primary - 133.400 Secondary - 135.625	<b>TBILISI</b> APP - 134.600 TWR Primary - 119.000 TWR Secondary - 128.000 INFO - 124.150 ATIS - 132.800	<b>KUTAISSI</b> APP - 127.100 TWR - 125.500 <b>BATUMI</b> APP - 124.425 TWR - 118.600	<b>MESTIA</b> INFO - 121.100 <b>AMBROLAURI</b> INFO - 119.850 <b>NATAKHTARI</b> 131.750 <b>TELAVI</b> TWR-120.000
-----------	-----	---------	-----	--------------------------	---	---	---	---	--	--

*PAGE INTENTIONALLY LEFT BLANK*



**ENROUTE ATCSMAC Sectors' Coordinates**

Sector	Lateral limits
Sector 1	413100N 0413300E - 413600N 0411700E - 415400N 0402000E - 431100N 0395500E - 432236N 0400048E - 431723N 0400517E - 423757N 0415113E - 423646N 0415418E - 422435N 0423724E - 421653N 0430357E - 421747N 0431222E - 422058N 0432040E - 421809N 0433231E - 421352N 0433413E - 420553N 0441607E - 420420N 0443356E - 420517N 0445232E - 420349N 0450147E - 415027N 0445556E - 414618N 0445842E - 414242N 0452300E - 414642N 0452950E - 414226N 0455734E - 414754N 0460208E - 414346N 0461053E - then along the state border with Azerbaijan to - 4118N 04501E - then along the state border with Armenia to - 411320N 0444622E - 411918N 0442911E - 411915N 0441950E - 413057N 0441943E - 413059N 0442651E - 413853N 0443554E - 414721N 0443551E - 415226N 0442856E - 415430N 0441913E - 415903N 0435727E - 420008N 0435210E - 420110N 0431601E - 420101N 0430617E - 420436N 0424253E - 415925N 0421406E - 415236N 0415949E - 414731N 0415445E - 414034N 0415505E - 412933N 0414259E - then along the state border with Turkiye - 413100N 0413300E
Sector 2	415903N 0435727E - 415430N 0441913E - 415226N 0442856E - 414721N 0443551E - 413853N 0443554E - 413059N 0442651E - 413057N 0441943E - 411915N 0441950E - 411721N 0441951E - 411717N 0440943E - 412627N 0440643E - 413227N 0440444E - 413510N 0440008E - 413809N 0440005E - 413920N 0440816E - 414056N 0441922E - 414820N 0441917E - 415903N 0435727E
Sector 3	420349N 0450147E - 420244N 0450841E - 415720N 0454158E - 414754N 0460208E - 414226N 0455734E - 414642N 0452950E - 414242N 0452300E - 414618N 0445842E - 415027N 0445556E - 420349N 0450147E
Sector 4	423458N 0424250E - 423441N 0431857E - 422935N 0431905E - 422711N 0432036E - 422429N 0432506E - 422257N 0432944E - 421008N 0443329E - 421111N 0445232E - 420553N 0450936E - 420244N 0450841E - 420349N 0450147E - 420517N 0445232E - 420420N 0443356E - 420553N 0441607E - 421352N 0433413E - 421809N 0433231E - 422058N 0432040E - 421747N 0431222E - 421653N 0430357E - 422435N 0423724E - 423458N 0424250E
Sector 5	420110N 0431601E - 420008N 0435210E - 415903N 0435727E - 414820N 0441917E - 414056N 0441922E - 413920N 0440816E - 414617N 0440811E - 414927N 0440532E - 415104N 0440145E - 415250N 0435255E - 415223N 0431615E - 420110N 0431601E
Sector 6	411344N 0441053E - 411717N 0440943E - 411721N 0441951E - 411915N 0441950E - 411918N 0442911E - 411320N 0444622E - then along the state border with Armenia to - 411344N 0441053E
Sector 7	424334N 0415510E - 423637N 0421958E - 423458N 0424250E - 422435N 0423724E - 423646N 0415418E - 423757N 0415113E - 424334N 0415510E
Sector 8	412933N 0414259E - 414034N 0415505E - 414731N 0415445E - 415236N 0415949E - 415925N 0421406E - 420436N 0424253E - 420101N 0430617E - 420110N 0431601E - 415223N 0431615E - 415250N 0435255E - 415104N 0440145E - 414927N 0440532E - 414617N 0440811E - 413920N 0440816E - 413809N 0440005E - 413510N 0440008E - 413227N 0440444E - 412627N 0440643E - 412619N 0435141E - 414016N 0435126E - 414552N 0434101E - 414511N 0425535E - 413727N 0422643E - 413151N 0421851E - 413122N 0415858E - then along the state border with Turkiye - 412933N 0414259E
Sector 9	422935N 0431905E - 421939N 0440608E - 421111N 0445232E - 421008N 0443329E - 422257N 0432944E - 422429N 0432506E - 422711N 0432036E - 422935N 0431905E
Sector 10	414346N 0461053E - 414754N 0460208E - 415720N 0454158E - 420018N 0454426E - 415755N 0460110E - 415213N 0461316E - 414847N 0462030E - then along the state border with Azerbaijan to - 414346N 0461053E
Sector 11	410752N 0433651E - 411752N 0433639E - 412619N 0435141E - 412627N 0440643E - 411717N 0440943E - 411344N 0441053E - then along the state border with Armenia - 410752N 0433651E

For continuation see ENR 6-15-5

*PAGE INTENTIONALLY LEFT BLANK*

**ENROUTE ATCSMAC Sectors' Coordinates (Continuation)**

Sector	Lateral limits
Sector 12	415952N 0460704E - 415536N 0461608E - 415213N 0461316E - 415755N 0460110E - 420018N 0454426E - 415720N 0454158E - 420244N 0450841E - 420553N 0450936E - 421111N 0445232E - 421939N 0440608E - 422935N 0431905E - 423441N 0431857E - 423432N 0433156E - 423004N 0434253E - 422751N 0434818E - 422443N 0440421E - 422214N 0440813E - 422149N 0441126E - 422526N 0443143E - 421550N 0451719E - 421054N 0452252E - 420843N 0453720E - 421005N 0454230E - then along the state border with Russia - 415952N 0460704E
Sector 13	413122N 0415858E - 413151N 0421851E - 413727N 0422643E - 414511N 0425535E - 414552N 0434101E - 414016N 0435126E - 412619N 0435141E - 411752N 0433639E - 410752N 0433651E - then along the state border with Armenia to - 4107N 04328E - then along the state border with Turkiye to - 411915N 0430803E - 412738N 0430749E - 412727N 0425641E - then along the state border with Turkiye to - 413122N 0415858E
Sector 14	425821N 0424441E - 425201N 0430454E - 423953N 0434241E - 423004N 0434253E - 423432N 0433156E - 423441N 0431857E - 423458N 0424250E - 423637N 0421958E - 424334N 0415510E - 425220N 0420123E - 424835N 0423733E - 425821N 0424441E
Sector 15	422443N 0440421E - 422829N 0442001E - 422526N 0443143E - 422149N 0441126E - 422214N 0440813E - 422443N 0440421E
Sector 16	431243N 0420754E - 425821N 0424441E - 424835N 0423733E - 425220N 0420123E - 424334N 0415510E - 423757N 0415113E - 431723N 0400517E - 432236N 0400048E - 432300N 0400100E - then along the state border with Russia to - 431243N 0420754E
Sector 17	423705N 0441046E - 423602N 0442052E - 423418N 0443843E - 422610N 0451722E - 422017N 0454433E - then along the state border with Russia to - 421005N 0454230E - 420843N 0453720E - 421054N 0452252E - 421550N 0451719E - 422526N 0443143E - 422829N 0442001E - 422443N 0440421E - 422751N 0434818E - 423004N 0434253E - 423953N 0434241E - 423935N 0434543E - then along the state border with Russia to - 423705N 0441046E
Sector 18	414847N 0462030E - 415213N 0461316E - 415536N 0461608E - 415952N 0460704E - then along the state border with Russia to - 4155N 04625E - then along the state border with Azerbaijan - 414847N 0462030E
Sector 19	423935N 0434543E - 423953N 0434241E - 425201N 0430454E - 425554N 0431214E - then along the state border with Russia to - 423935N 0434543E
Sector 20	424223N 0441758E - 423602N 0442052E - 423705N 0441046E - then along the state border with Russia to - 424223N 0441758E
Sector 21	423505N 0451725E - 422610N 0451722E - 423418N 0443843E - 424446N 0443840E - then along the state border with Russia to - 423505N 0451725E
Sector 22	412727N 0425641E - 412738N 0430749E - 411915N 0430803E - then along the state border with Turkiye to - 412727N 0425641E
Sector 23	430923N 0425248E - 425821N 0424441E - 425201N 0430454E - 425554N 0431214E - then along the state border with Russia to - 430923N 0425248E
Sector 24	424446N 0443840E - 423418N 0443843E - 423602N 0442052E - 424223N 0441758E - then along the state border with Russia to - 424446N 0443840E
Sector 25	430923N 0425248E - 425821N 0424441E - 431243N 0420754E - then along the state border with Russia to - 430923N 0425248E
Sector 26	422017N 0454433E - 422610N 0451722E - 423505N 0451725E - then along the state border with Russia to - 422017N 0454433E

*PAGE INTENTIONALLY LEFT BLANK*